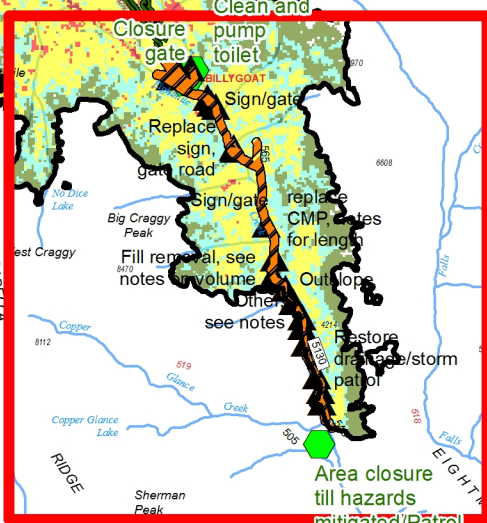
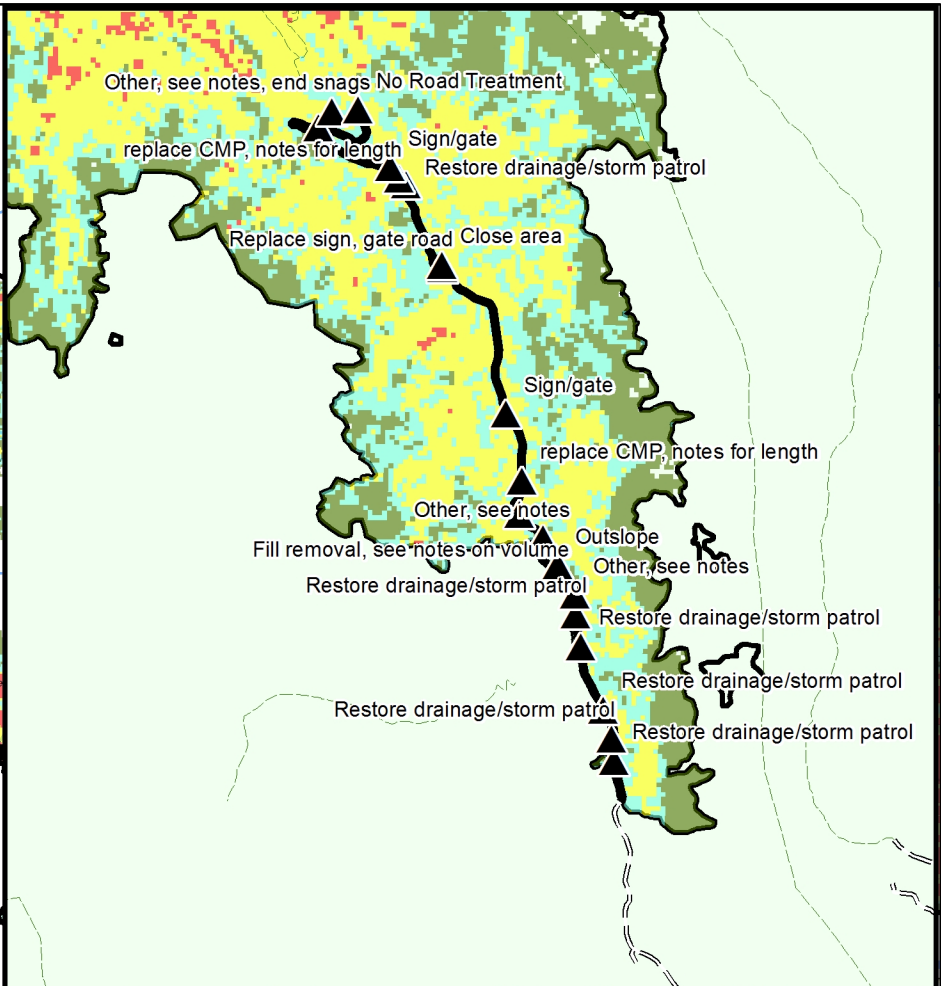
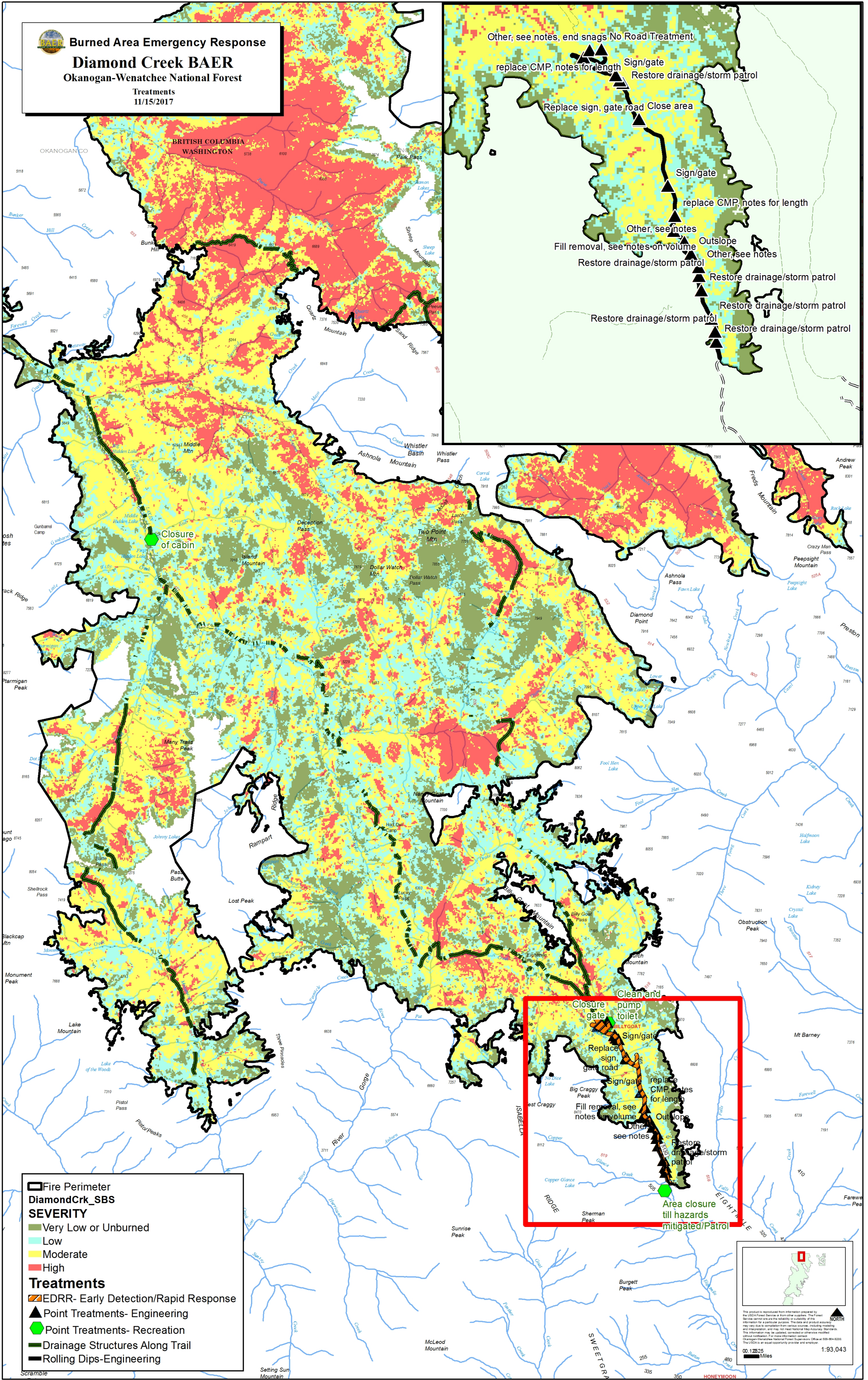




Burned Area Emergency Response
Diamond Creek BAER
 Okanogan-Wenatchee National Forest
 Treatments
 11/15/2017



Fire Perimeter
 DiamondCrk_SBS

SEVERITY

- Very Low or Unburned
- Low
- Moderate
- High

Treatments

- EDRR- Early Detection/Rapid Response
- Point Treatments- Engineering
- Point Treatments- Recreation
- Drainage Structures Along Trail
- Rolling Dips-Engineering

Area closure till hazards mitigated/Patrol

This product is reproduced from information prepared by the USDA Forest Service or its contractor. The Forest Service disclaims any liability for the accuracy of the information for a particular purpose. The date and product accuracy may vary due to completion from various sources, including monitoring and map projection, and may not meet National Map Accuracy Standards. The information may be updated, corrected or otherwise modified without notification. For more information contact: Okanogan-Wenatchee National Forest Supervisor, Office at 509-984-9200. The USDA is an equal opportunity provider and employer.

1:93,043

0 1/2 1 Miles